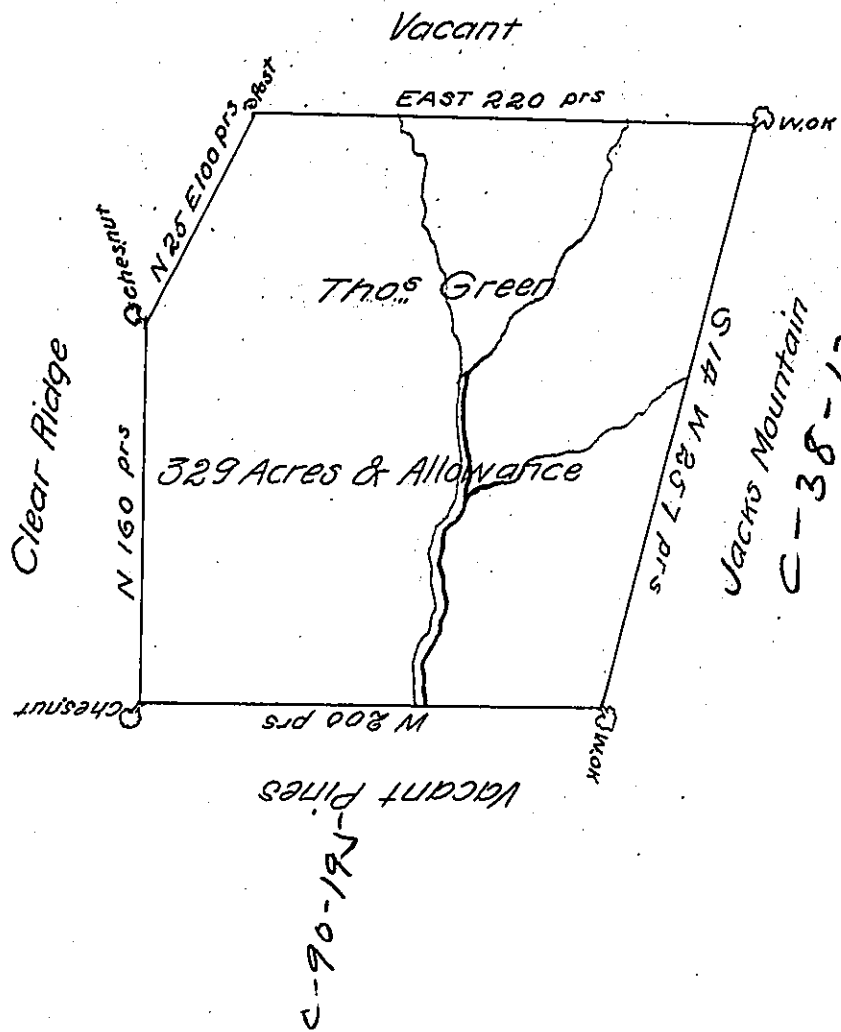


a-70 - 269



A Draught of a Tract of Land Situate in Bedford County Sherley Township  
 on the Head of the Mountain Branch of three Spring Creek Adjoining an Improvement  
 of William Corbin to the South Containing 529 Acres and the Usual Allowance of Six  
 Per Cent for Roads Surveyed the 27<sup>th</sup> Day of April 1785 in pursuance of a Warrant  
 Granted to Thos Green Dated Feb<sup>y</sup> 26<sup>th</sup> ~~Day~~ 1785

Pr Robert Galbreath

George Woods D.S.

IN TESTIMONY that the above is a copy of the original remaining on file in  
 the Department of Internal Affairs of Pennsylvania, made  
 conformably to an Act of Assembly approved the 16th day of  
 February, 1833, I have hereunto set my Hand and caused  
 the Seal of said Department to be affixed at Harrisburg,  
 this twenty second day of December 1907

*Geo. B. Perry*  
 Secretary of Internal Affairs